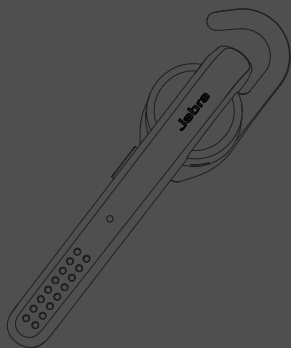


**Jabra**<sup>®</sup>  
YOU'RE ON

# JABRA STEALTH



User Manual

[jabra.com/stealth](http://jabra.com/stealth)

A BRAND BY

**GN Netcom**

---

© 2014 GN Netcom A/S. All rights reserved. Jabra® is a registered trademark of GN Netcom A/S. All other trademarks included herein are the property of their respective owners. The Bluetooth® word mark and logos are owned by the Bluetooth SIG, Inc. and any use of such marks by GN Netcom A/S is under license. (Design and specifications subject to change without notice).

---

MADE IN CHINA  
MODEL:OTE18



---

**Declaration of Conformity** can be found on  
[www.jabra.com/CP/US/declarations-of-conformity](http://www.jabra.com/CP/US/declarations-of-conformity)

# CONTENTS

1. WELCOME .....	4
2. HEADSET OVERVIEW .....	5
3. HOW TO WEAR.....	6
3.1 CHANGE EARGELS	
3.2 ATTACHING THE EARHOOK	
4. HOW TO CHARGE THE BATTERY .....	8
5. HOW TO CONNECT.....	9
5.1 CONNECT TO MOBILE DEVICE	
5.2 CONNECT TO MOBILE DEVICE (NFC)	
6. HOW TO USE .....	11
6.1 MULTIPLE CALL HANDLING	
6.2 LIST OF VOICE GUIDANCE	
7. SOFTWARE .....	15
7.1 JABRA ASSIST	
8. SUPPORT .....	16
8.1 FAQ	
8.2 HOW TO CARE FOR YOUR HEADSET	
9. TECHNICAL SPECIFICATIONS .....	17

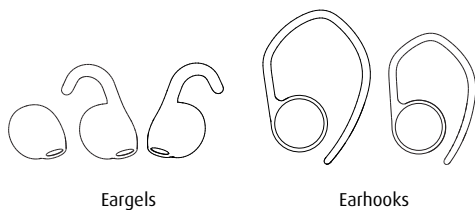
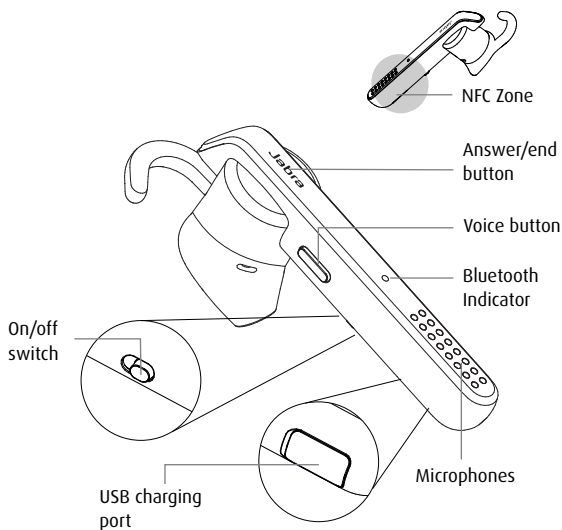
# 1. WELCOME

Thank you for using the Jabra Stealth. We hope you will enjoy it!

## **JABRA STEALTH FEATURES**

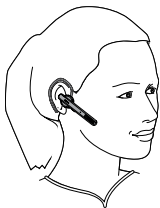
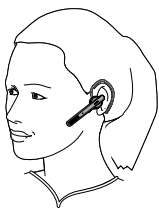
- Voice guidance
- Smart phone voice controls
- Battery and pairing status display
- HD voice
- Up to 6 hours talk time
- Power Nap feature
- Wireless freedom - Up to 30m/98ft

## 2. HEADSET OVERVIEW



## 3. HOW TO WEAR

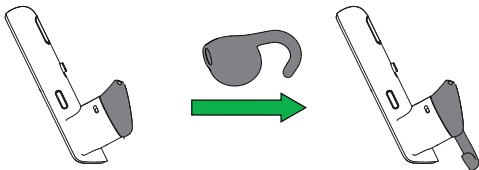
The headset can be worn with or without the earhook, on the left or right ear. Additional earhooks and eargels are available in the pack.



### 3.1 CHANGE EARGELS

---

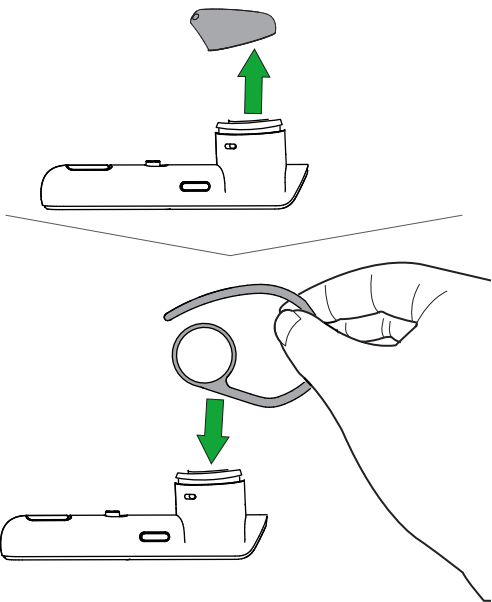
Choose between different ergo-designed eargels for optimal fit and comfort.



## 3.2 ATTACHING THE EARHOOK

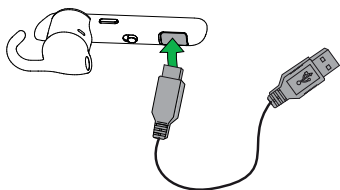
---

The earhook can be attached to the headset if the earhook fit is preferred.



## 4. HOW TO CHARGE THE BATTERY

1. Pull back the charging cover on the headset to expose the USB charging port.
2. Connect the headset to a USB port using the USB cable.



**NOTE:** For safety reasons, it is recommended not to use the headset while it is charging.

It takes approx. 2 hours to fully charge the headset.

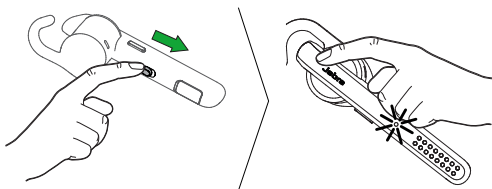


# 5. HOW TO CONNECT

## 5.1 CONNECT TO MOBILE DEVICE

---

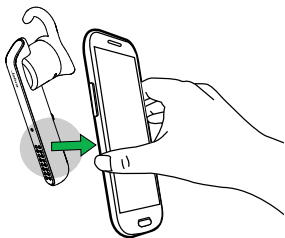
1. Turn the headset on (set the **On/off** switch to the On position).
2. Press and hold (3 secs) the **Answer/end** button until the Bluetooth indicator flashes blue, and pairing mode is announced in the headset.
3. Follow the voice-guided pairing instructions to pair to your Bluetooth device.



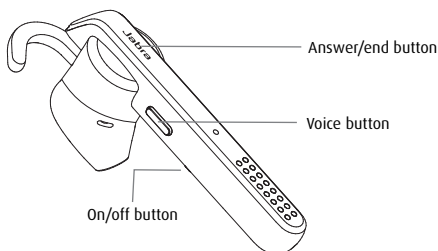
## 5.2 CONNECT TO MOBILE DEVICE (NFC)




---

1. Ensure that NFC is enabled on your mobile device.
2. Slowly slide the NFC zone of the headset against the NFC zone of the mobile device until a connection is confirmed.



## 6. HOW TO USE




FUNCTION	ACTION
 <p data-bbox="260 783 342 811">On/Off</p>	<p data-bbox="493 783 791 811">Slide the <b>ON/OFF</b> switch</p>
	<p data-bbox="260 911 410 979">Answer/end call</p> <p data-bbox="493 911 873 979">Tap the <b>Answer/end</b> button, or say 'Answer'</p> <hr/> <p data-bbox="260 1037 387 1065">Reject call</p> <p data-bbox="493 1019 840 1087">Double-tap the <b>Answer/end</b> button, or say 'Ignore'</p> <hr/> <p data-bbox="260 1128 389 1196">Redial last number</p> <p data-bbox="493 1128 840 1196">Double-tap the <b>Answer/end</b> button when not on a call</p>
	<p data-bbox="260 1240 430 1384">Activate voice controls (phone dependent)</p> <p data-bbox="493 1240 884 1384">Tap the <b>Voice</b> button for voice dialing (e.g. Siri/Google Now). Press and hold (1 sec) the <b>Voice</b> button for voice commands</p> <hr/> <p data-bbox="260 1447 433 1475">Mute/unmute</p> <p data-bbox="493 1428 864 1496">Tap the <b>Voice</b> button when on a call</p>

## 6.1 MULTIPLE CALL HANDLING

---

The headset can accept and handle multiple calls simultaneously.

	FUNCTION	ACTION
	End current call and answer incoming call	Tap the <b>Answer/end</b> button
	Switch between held call and active call	Press and hold (2 secs) the <b>Answer/end</b> button
	Put current call on hold and answer incoming call	Press and hold (2 secs) the <b>Answer/end</b> button
	Reject incoming call	Double-tap the <b>Answer/end</b> button

---

## 6.2 LIST OF VOICE GUIDANCE

---

CLICK TO LISTEN	WHAT YOU HEAR
	Power on
	Power off
	Welcome. You are now ready for pairing
	Pairing cancelled
	Pairing failed
	Mobile connected
	PC connected
	Two devices connected
	Not connected
	Redialing
	Mute on
	Mute off
	Call from...

**CLICK TO LISTEN**

**WHAT YOU HEAR**

Unknown caller

---

Low battery

---

Your remaining talk time is...

---

Say a command

---

Voice on

---

Voice off

---

# 7. SOFTWARE

## 7.1 JABRA ASSIST

---

Jabra Assist is a smartphone app that enables GPS tracking of the headset, pairing assistance, and headset battery status.

Android download - [Google Play](#)  
iOS download - [App Store](#)

# 8. SUPPORT

## 8.1 FAQ

---

View the comprehensive FAQ on [Jabra.com/stealth](https://www.jabra.com/stealth).

## 8.2 HOW TO CARE FOR YOUR HEADSET

---

- Always store the headset with the power off and safely protected.
- Avoid storage at extreme temperatures (above 70°C/158°F or below -10°C/14°F). This can shorten battery life and may affect headset operation.
- Do not expose the headset to rain or other liquids.



## 9. TECHNICAL SPECIFICATIONS

JABRA STEALTH	SPECIFICATION
Weight:	under 7.9g
Dimensions:	L 64.9 mm x W 15.3 mm x H 24.9 mm
Microphones:	Dual microphone technology
Speaker:	11 mm dynamic speaker
Operating range:	30 m/98 ft (phone dependent)
Bluetooth version:	4.0
Paired devices:	Up to 8, connected to two at the same time (MultiUse™)
Supported Bluetooth profiles:	A2DP(v1.2), Hands Free Profile (v1.6), Headset profile(v1.2), Phone book access profile (v1.0)
Talk time:	Up to 6 hours
Standby time:	Up to 10 days
Operating temperature:	-10°C to 55°C (14°F to 131°F)
Storage temperature:	-20° C to 70°C (-4°F to 158°F)
Pairing passkey or PIN:	0000

