

12X

# BLU-RAY COMBO

BC-12D2HT



ASUS BC-12D2HT is a powerful and energy-saving Blu-ray disc drive capable of reading from 12X BD format and writing to 16X DVD±R format. With M-DISC Support, users can store their precious memories for millennium. For data protection, BC-12D2HT integrates password controls and encryption plus encoded file name functionality, ensuring information and documents are extra-safe.

## FEATURES

Disc Encryption  
Double Security On-the-Go

NERO BackItUp\*  
Full Backup for Your Android Devices

BDXL Support  
Up to 128 GB Storage on one Disc

M-DISC Support  
1000-year Storage Solution

\* Only available on retail box version



## SPECIFICATIONS

### Read Speed

BD-R(SL): 12X  
BD-R(SL, M-DISC): 12X  
BD-R(DL): 8X  
BD-R(LTH/TL/QL): 6X  
BD-RE(SL): 8X  
BD-RE(DL): 6X  
BD-RE(TL): 4X  
BD-ROM(SL): 12X  
BD-ROM(DL): 8X  
DVD+R(SL): 16X  
DVD+R(SL, M-DISC): 12X  
DVD-R(SL): 16X  
DVD±RW: 12X  
DVD-ROM(SL): 16X  
DVD±R(DL): 12X  
DVD-ROM(DL): 12X  
DVD-RAM: 5X  
CD-R/ROM: 48X  
CD-RW: 40X  
BDMV Playback: 6X  
DVD Video Playback: 6X  
VCD Playback: 10X  
Audio CD Playback: 10X

### Write Speed

DVD±R(SL): 16X  
DVD+R(SL, M-DISC): 4X  
DVD±RW: 8X  
DVD-RW: 6X  
DVD±R(DL): 8X  
DVD-RAM: 5X  
CD-R: 48X  
CD-RW: 24X

### Access Time(1/3 Stroke)

BD-ROM: 180 ms  
DVD-ROM: 160 ms  
DVD-RAM: 180 ms  
CD-ROM: 150 ms

### O/S Compatibility

Windows<sup>®</sup> 10  
Windows<sup>®</sup> 8  
Windows<sup>®</sup> 7  
Windows Vista<sup>®</sup>  
Windows<sup>®</sup> XP

### System Requirement

CPU: Intel<sup>®</sup> Pentium<sup>®</sup> D 945(3.4 GHz) or higher  
RAM: 1 GB or more is recommended  
HDD: 10 GB or more  
Graphics Card: NVIDIA<sup>®</sup> GeForce 7600GT or ATI X1600 series and above  
Use HDCP Compatible display and VGA card to High Definition digital output

### Disc Formats

Reading:	Writing:
BD-R(SL/DL/TL/QL)	DVD±R(SL/DL)
BD-RE(SL/DL/TL)	DVD±RW
BD-ROM(SL/DL)	DVD-RAM
DVD±R(SL/DL)	CD-R
DVD±RW	CD-RW
DVD-ROM(SL/DL)	
DVD-RAM	
DVD Video	
CD-R	
CD-RW	
CD-ROM	
Audio CD	
VCD	
CD-I	
CD-Extra	
Photo CD	
CD-text	
CD-ROM/XA	
Multi-session CD	

### Configurations

#### Mounting Orientation

Vertical and Horizontal  
(+12° ~ -12°)

#### Dimensions

42 x 146 x 170 mm(H/W/D)

#### Weight

680 g

### Interface

SATA

### Disc Diameters

12 cm and 8 cm

### Electrical and Environmental Specifications

#### Power Requirement

DC +5V ± 2.5%  
DC +12V ± 3%

#### Temperature

Operating: 5°C to 45°C  
Storage: -40°C to 60°C

#### Humidity

Operating: 15%~80%  
(Non-condensing)  
Storage: 15%~90%  
(Non-condensing)

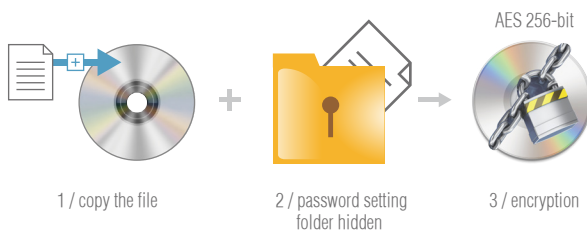
# PACKAGE CONTENTS

- CyberLink Power2Go 8
- CyberLink PowerBackup 2.5
- E-Green



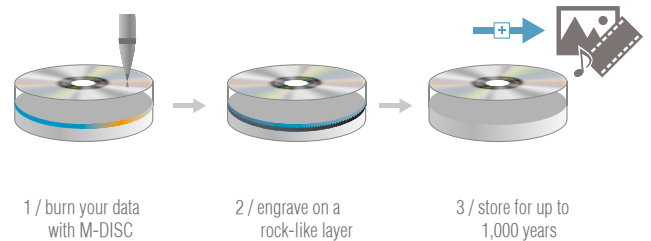
## DISC ENCRYPTION *Double Security On-the-Go*

Password control access and hidden-file folder function.



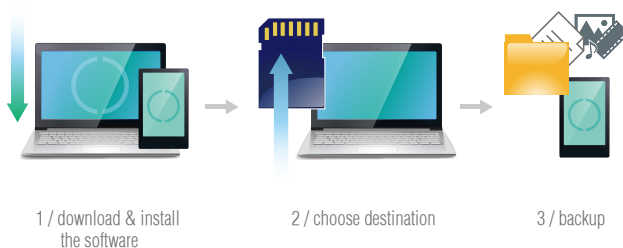
## M-DISC SUPPORT *1000-year Storage Solution*

Save your priceless memories or data for up to 1,000 years.



## NERO BACKITUP FOR ANDROID\* *Full Backup for Your Android Devices*

Free included app makes it easy to back up all of your important data to the hard drive or SD card on the PC wirelessly.



## BDXL™ SUPPORT *Maximum Data Storage*

Up to 128 GB data storage on one disc.



\* Only available on retail box version