



N600 Dual Band WiFi Gigabit Modem Router with Voice

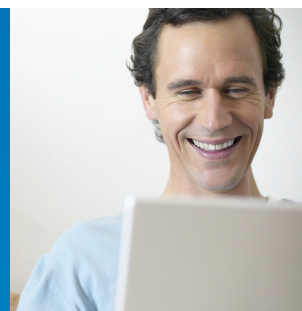


Perfect for

- Connecting to your fixed line ADSL service
- Future proofing with a Gigabit WAN port for high speed connection to the NBN and support for IPv6 addressing
- Sharing the connection of a 3G/4G USB dongle
- Reducing your phone call costs by utilising VoIP
- Creating a storage network to share files saved on a hard drive with all connected users

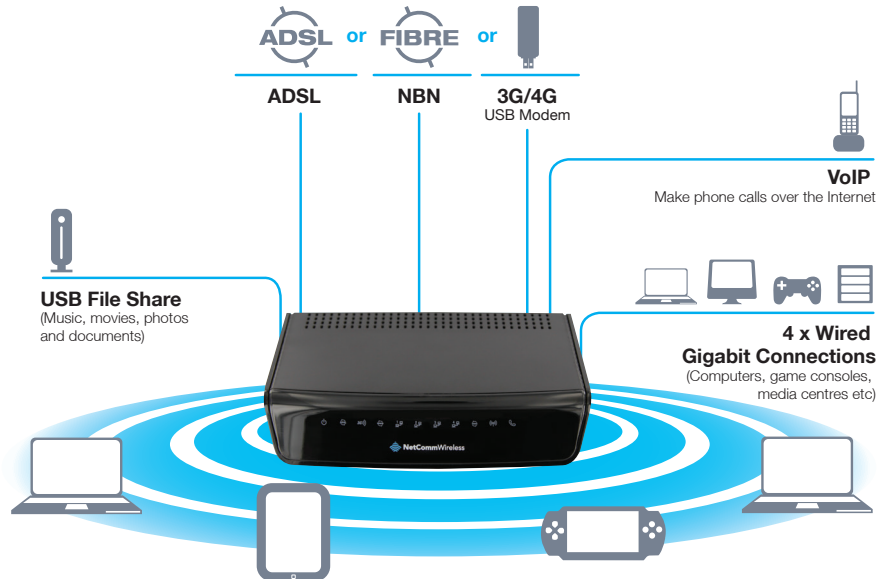
KEY FEATURES

- ⌚ Fully featured ADSL2+ Modem Router
- ⌚ 1 x 10/100/1000 Gigabit Ethernet WAN port for connection to fibre services
- ⌚ 4 x 10/100/1000 Gigabit Ethernet LAN ports for wired connections
- ⌚ High speed dual band Wireless N access point offering speeds of up to 600Mbps
- ⌚ 2.4GHz and 5GHz wireless frequency allows for cleanest possible wireless signal
- ⌚ 1 x FXS port for connecting a telephone to make VoIP calls
- ⌚ 2 x USB host ports – supports 3G/4G USB modem and USB storage device for file sharing
- ⌚ Built-in media server. Just add a USB hard drive
- ⌚ NBN ready: carefully developed hardware and software features to ensure this device is optimised for use on the National Broadband Network:
 - Wireline Routing Speeds
 - IGMP Snooping
 - Jumbo frame support
 - IPTV IGMP V1 V2 Pass through
 - VLAN tagged/untagged frames
 - QoS:TOS/DSCP to 802.1p mapping (DiffServ)
- ⌚ IPv6 ready for the next generation IP addressing
- ⌚ WPS button for simple setup of your wireless network
- ⌚ Multiple power saving features – time of day LED dimming, WiFi power save features, power down functions





N600 Dual Band WiFi Gigabit Modem Router with Voice



SPECIFICATIONS

PACKAGE INCLUDES

- N600 Dual Band WiFi Gigabit Modem Router with Voice
- Power Adapter
- Printed Quick Start Guide
- Ethernet Cable (RJ-45)
- Phone Cable (RJ-11)
- Wireless Security Card
- Warranty Card

ENVIRONMENTAL AND PHYSICAL

- Operating temperature: 0-40°C, Humidity: 10%-90% non-condensing
- Storage temperature: -10-70°C, Humidity: 0%-95% non-condensing
- Dimensions: 215mm (L) x 37mm(W) x 145mm(H)
- DC Input Voltage 12V/1.5A

DEVICE INTERFACE

- 1 x USB 2.0 for 3G/4G modems
- 1 x USB 2.0 for file sharing
- 1 x 10/100/1000Mbps RJ-45 WAN port
- 4 x 10/100/1000Mbps RJ-45 LAN ports
- 1 x RJ-11 FXS port for VoIP
- 1 x RJ-11 ADSL port
- WPS/Reset Button
- Power button
- Power jack
- Power / ADSL sync / 3G signal / Internet / LAN 1-4 / WAN / WiFi / FXS

ADSL2+

- ITU 992.1 (G.dmt) Annex A
- ITU 992.2 (G.lite)
- ITU 992.3 ADSL2 (G.dmt.bis)
- ITU 992.5 ADSL2+ (Annex M)
- PPPoE / PPPoA / IPoA / Static IP / Dynamic IP

WIRELESS WAN

- 1 x USB 2.0 port for external HSPA modem
- PPP (for WCDMA / HSPA)

ETHERNET WAN

- 1 x Gigabit WAN port (10/100/1000 Mbps)
- PPPoE, DHCP client, Static IP, PPTP, L2TP

WIFI

- IEEE 802.11n. Backwards compatible with IEEE 802.11b/g/a
- 2.4Ghz & 5Ghz Concurrent WiFi
- SSID broadcast or in stealth mode
- Auto/Manual Channel selection
- WEP/WPA/WPA-PSK/WPA2/WPA2-PSK
- WPS button (WiFi Protected Setup)

FUNCTIONALITY

IPv6 SUPPORT

- o Static IPv6
- o PPPoE
- o DHCPv6
- o Dual Stack IPv6

VOIP

PROTOCOL

- o SIP 2.0

VOICE COMPRESSION

- o G.711-Alaw voice compression
- o G.711-Mulaw voice compression
- o G.726-32 voice compression
- o G.729AB voice compression
- o G.168 116 ms tail line echo cancellation

CALL FUNCTION

- o Call forward
- o Caller ID
- o Call waiting
- o 3-way conference call
- o Hot line

SECURITY

- IP/Service Filter
- URL blocking
- MAC control
- DoS (Denial of Service) Protected

ROUTING

- Static Route
- Dynamic Route (RIP v1/v2)
- DMZ
- DDNS

ADMINISTRATION

- SNMP
- UPnP
- IGD
- Syslog
- Web-based UI
- Remote Login
- TR-069 Auto provisioning
- Backup/Restore Settings

COMPLIANCE

- A-Tick

ENVIRONMENTAL AND CERTIFICATION

PHYSICAL SPECIFICATION

- o Dimensions: 215mm (L) x 37mm (W) x 145mm (H)
- o Weight: 401g

By featuring both an ADSL2+ modem and a Gigabit WAN port you can choose whether you connect to the Internet via ADSL or a fibre service. If you don't have a fibre connection, the Gigabit WAN port will have you protected should you choose to update in the future.

This router also includes 2 x USB host ports that can be used to connect USB devices so that their capabilities can be shared with all connected users. Connect a compatible 3G/4G USB modem that can act as an additional connection option when a fixed line connection is not available, like at a holiday home. Connect a USB hard drive so that all files stored can be accessed and shared.

The included FXS port can be used to connect a standard telephone that will allow users to make calls over the Internet. By using a VoIP service, phone bills can be dramatically reduced and if connecting with Fibre, the phone line can be made redundant.

All of these features can be shared with at blistering speeds with multiple users via the built-in Gigabit LAN ports and the concurrent dual band WiFi N access point. The high speed dual band WiFi N provides a signal strong enough to penetrate the far corners of a house and can connect all WiFi enabled devices, such as laptops, smart phones, gaming consoles, tablets and PCs. The four Gigabit LAN ports provide a wired connection that can be used to connect desktop computers, media devices or any Ethernet equipped product.

- 1 Maximum wireless signal rate and coverage values are derived from IEEE Standard 802.11g and 802.11n specifications. Actual wireless speed and coverage are dependent on network and environmental conditions included but not limited to volume of network traffic, building materials and construction/layout.