

RIPJAWS KM780 RGB

User Manual



Table of Contents

4 Introduction

- Layout Overview

6 Profiles & Modes

- Introducing Profiles & Modes

- Link Program to a Profile

- Save Profile to Device

8 Profiles

- Create a Profile

- Select a Profile

- Delete a Profile

- Copy a Profile

- Export/Import a Profile

- Apply Profile Setting

9 Modes

- Create a Mode

- Select a Mode

- Activate a Mode

- Delete a Mode

- Copy a Mode

- Export/Import a Mode

10 Keys

- Introducing Programmable Keys

- Customize a Programmable Key

12 Macros

- Introducing Macros

13 Macros (Keystroke)

- Create a Macro

- Delete a Macro

- Copy a Macro

- Export/Import a Macro

- Record a Macro

- Edit a Macro

- Insert Keystrokes in Macro

16 Macros (Text)

- Create a Text Macro

- Delete a Text Macro

- Copy a Text Macro

- Export/Import a Text Macro

Table of Contents



17 Lighting Profiles

- Introducing Lighting Profiles
- Create a Lighting Profile
- Add a Color
- Change a Color

20 Setting

- Introducing Keyboard Settings
- Polling Rate
- N-Key Rollover
- Alert Mode (Timer Key)
- Repeat Rate Acceleration
- Repeat Delay
- Sleep Mode

23 Lighting

- Introducing Lighting
- Background Lighting
- Adjust Brightness
- Single Color Lighting
- Multiple Color Lighting
- Effect Lighting

27 Additional Settings

- Driver Settings
- Reset to Default Setting



Introduction

The G.SKILL Unified Driver System is the software system that allows full control of macros, lighting effects, and various customizations for your Ripjaws KM780 RGB mechanical gaming keyboard.

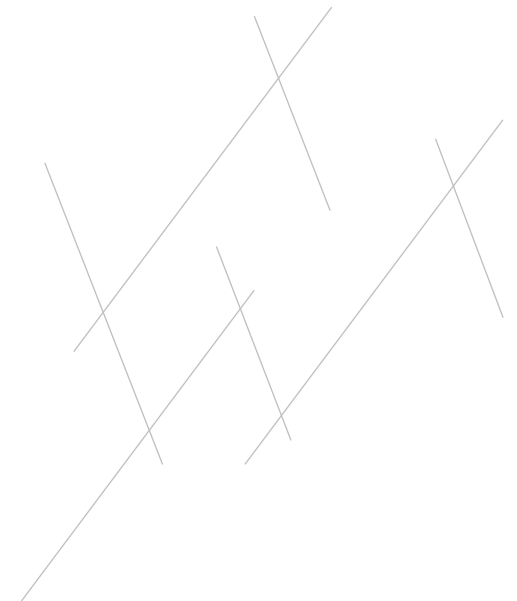
To help you through this manual, here are some useful key terms to keep in mind:

- **Profile:**
A full collection of settings and modes. Each profile has its own unique list of modes.
- **Mode:**
A single complete layout of key settings, keyboard settings, and lighting effects. A single profile supports up to three modes, which can be stored in the on-board memory of your keyboard.

- **Key:**
Refers to the keyboard input. Each key may have its own default function, or it can be programmed to have a customized function through the software system.
- **Macro:**
A powerful function that allows you to execute a series of key presses with the press of a designated key.

To open the G.SKILL Unified Driver System, go to the system tray and double click on the G.SKILL icon.

You are now ready to begin.

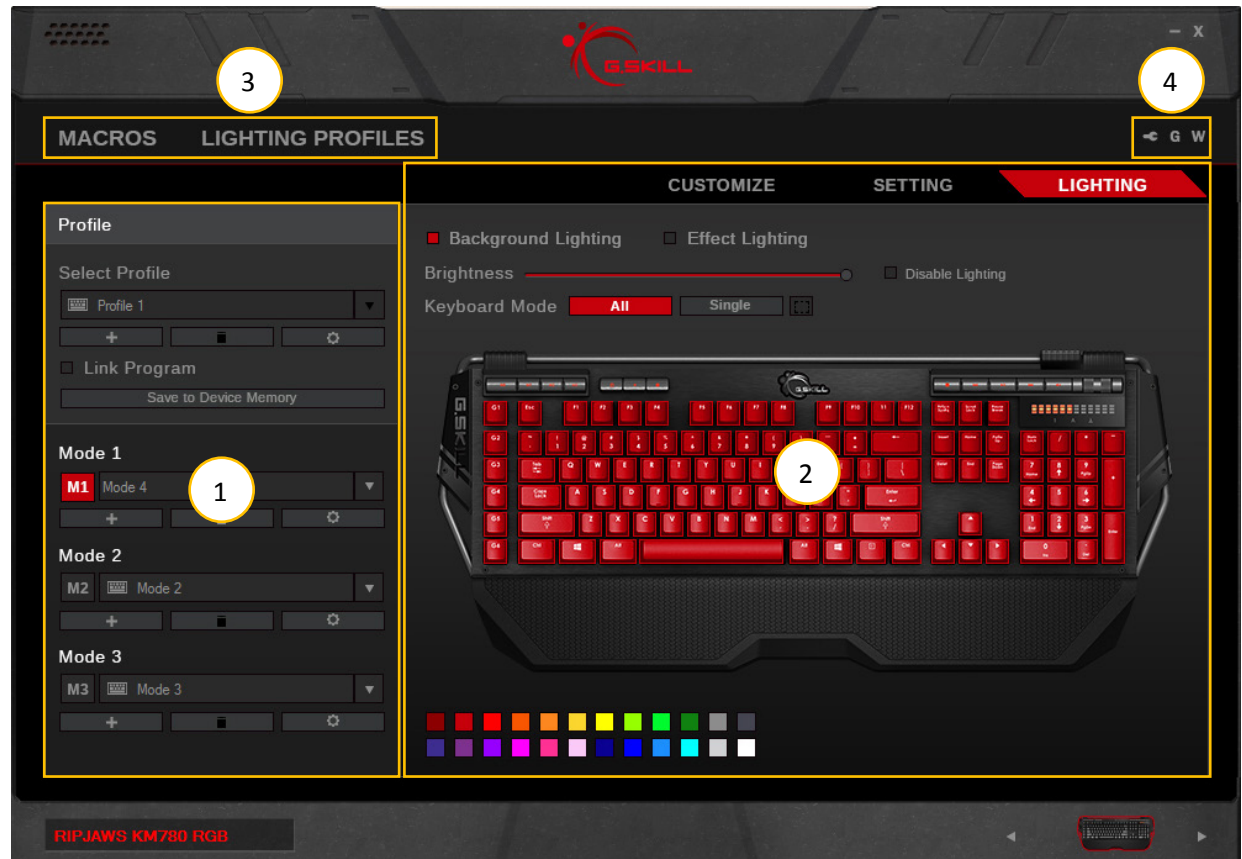


Introduction

Layout Overview

The G.SKILL Unified Driver System has four main sections:

1. Profiles & Modes:
Create and manage profiles and modes. Activate and store a profile to the keyboard.
2. Mode Settings:
Customizable settings for each mode.
3. Macros & Lighting Profiles:
Create and manage macros and lighting profiles to use in mode settings.
4. Additional Settings:
Access to language setting, device information, firmware and software updates, and profile reset.



Profiles & Modes

Introducing Profiles & Modes

A **profile** is a collection of settings and modes that can be saved into the on-board memory of your keyboard, allowing the customization to follow the device, no matter which computer it's connected to.

A **mode** is a single complete layout of key settings (e.g. macros), keyboard settings (e.g. polling rate), and lighting effects.

This section will help you manage your profiles and modes.



Profiles & Modes

Link Program to a Profile

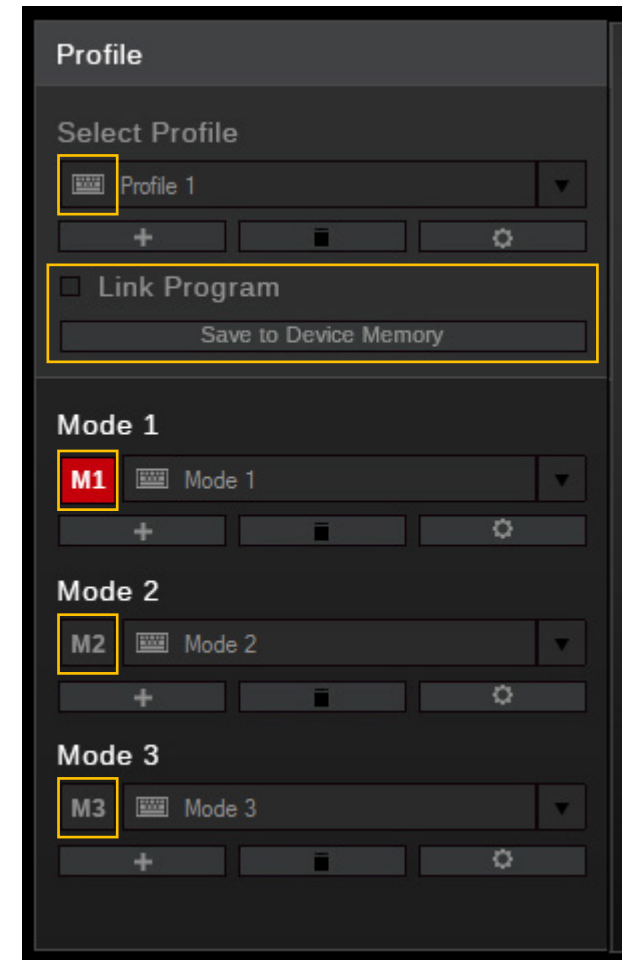
You have the option to automatically load a profile when launching a certain program.

Check the box next to “Link Program” and select a *.exe file to link the selected profile to a program.

Save Profile to Device

Your Ripjaws KM780 keyboard can store a single profile (of three modes) within the keyboard on-board memory. Click “Save to Device Memory” to save the currently selected profile and modes to your keyboard.

Once the profile and modes are saved to the keyboard, a small keyboard icon will appear to the left of the profile or mode name.



Profiles

Create a Profile

To create a new profile, click on the “+” button located under the profile name. A new profile will be automatically generated using default settings.

Select a Profile

Click the upside-down triangle to the right of the profile name for a drop-down list of available profiles. If only one profile is available, the drop-down list will be unavailable.

Delete a Profile

Click on the trash bin icon located below the profile name to delete a profile. A confirmation dialogue window will pop up to confirm the deletion. A profile cannot be deleted if there are no other selectable profiles or if the profile is currently in use by the device.

Copy a Profile

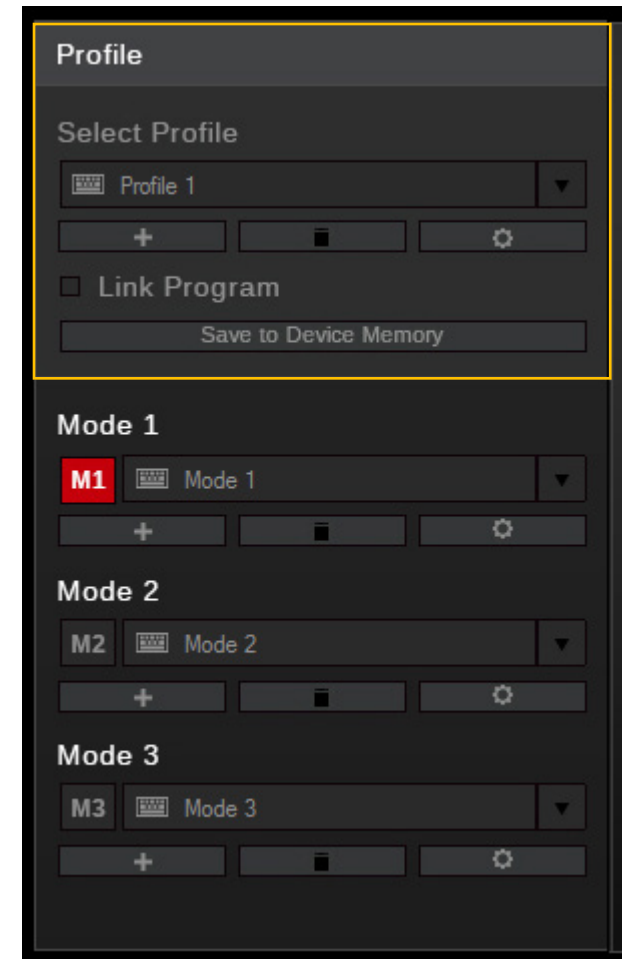
Click on the gear icon below the profile name, then choose “Copy” from the list to make an exact copy of the profile, including the modes created under the profile.

Export/Import a Profile

Click on the gear icon below the profile name, then choose “Export” (or “Import”) from the list. A window will prompt you to choose a location and a file name to save (or load) your profile.

Apply Profile Setting

To apply the current profile settings, click “Save to Device Memory”.



Modes

Create a Mode

To create a new mode, click on the “+” button located under the mode name. A new mode will be automatically generated using default settings.

Select a Mode

Click the upside-down triangle to the right of the mode name for a drop-down list of available modes. The drop-down list will be unavailable if there are less than three modes in the current profile.

Activate a Mode

The red icon designated “M1”, “M2”, and “M3” indicates the current active mode. This matches the mode keys with the same names on the keyboard.

Delete a Mode

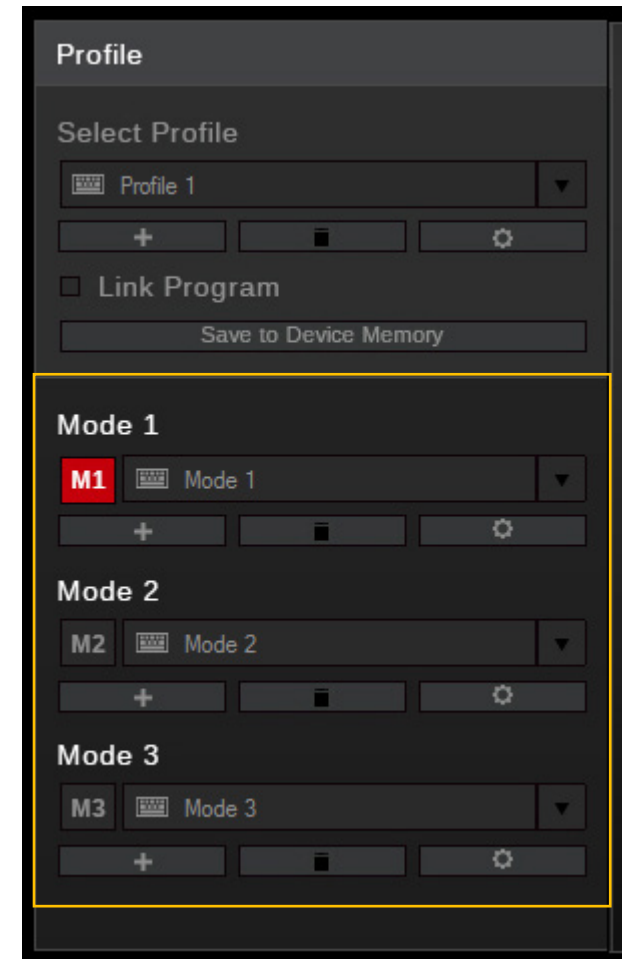
Click on the trash bin icon located below the mode name to delete the currently selected mode. A mode cannot be deleted if there are no other selectable modes or if the mode is currently in use by the device.

Copy a Mode

Click on the gear icon below the mode name and select “Copy” from the list to make an exact copy of the mode.

Export/Import a Mode

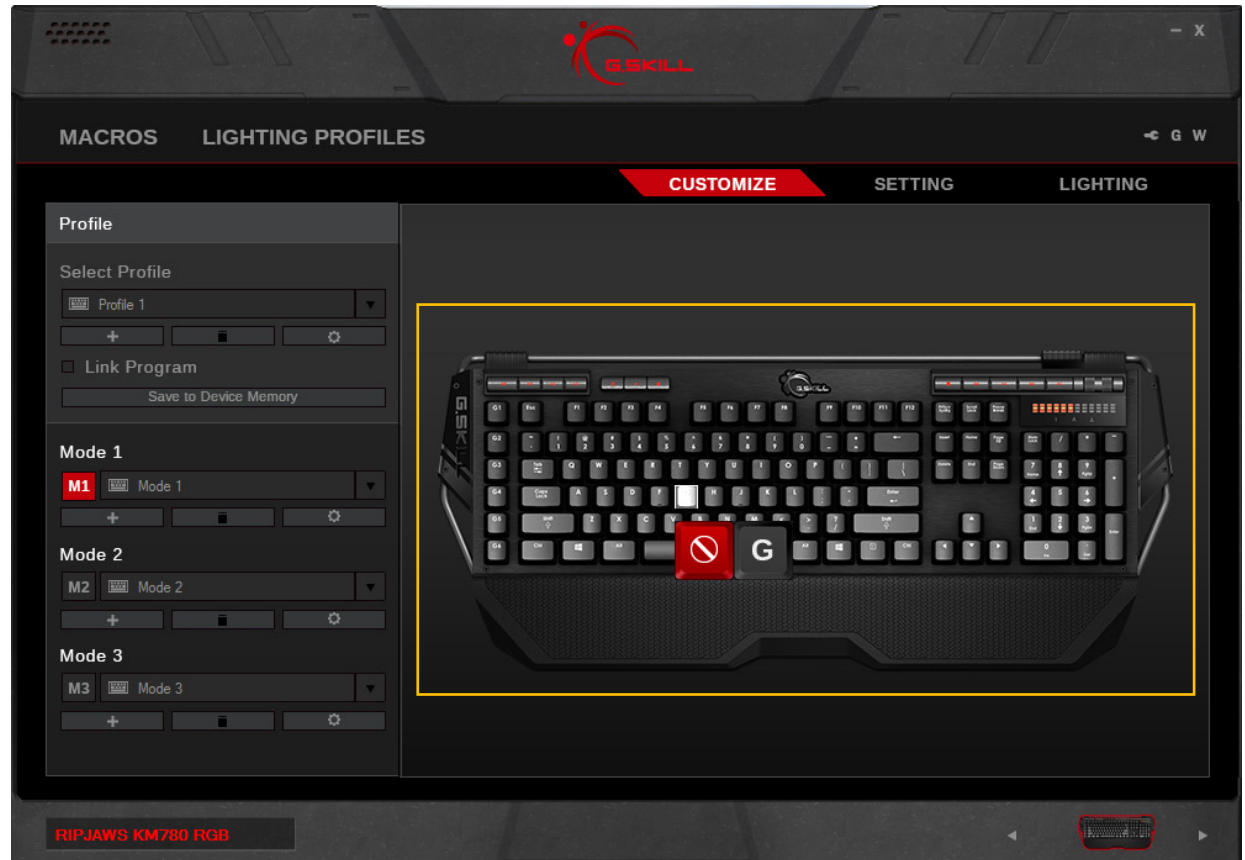
Click on the gear icon below the mode name and select “Export” (or “Import”) from the list. A window will prompt you to choose a location and a file name to save (or load) your mode.



Keys

Introducing Programmable Keys

Under the “Customize” menu, you can customize the function of each key on the keyboard. When the mouse cursor hovers over a programmable key, the display will show the key and its current function.



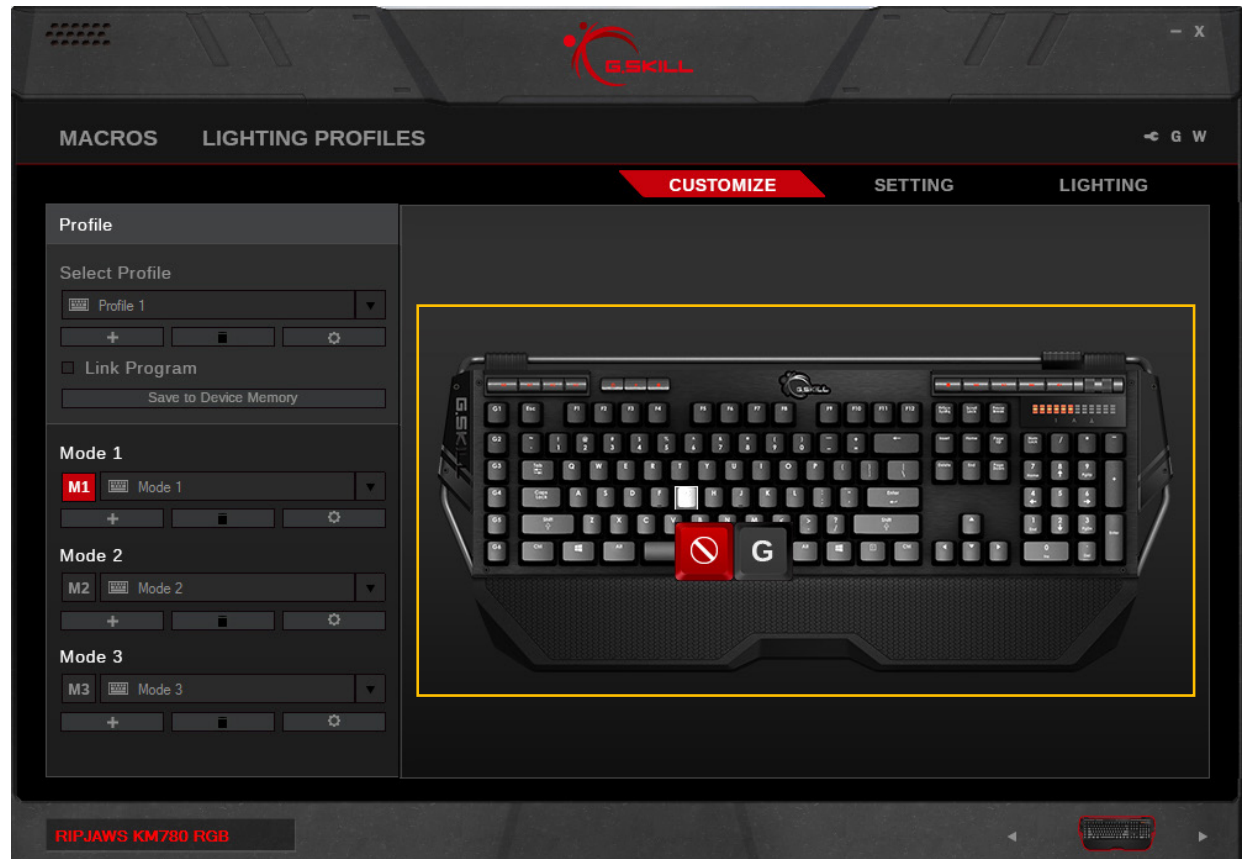
Keys

Customize a Programmable Key

Click on the key you wish to customize, and a “Key Assignment” window will pop up. Choose from the drop-down list for the desired function. Macros can be selected here to customize a particular key to a macro. Once the desired function is selected, click “Save” to return to the “Customize” menu.

Once you have finished customizing the key functions, please click “Save to Device Memory” under the profile name to apply the settings.

Note: Make sure you are customizing to the correct mode by selecting the desired mode (M1, M2, or M3) before customizing the key function.



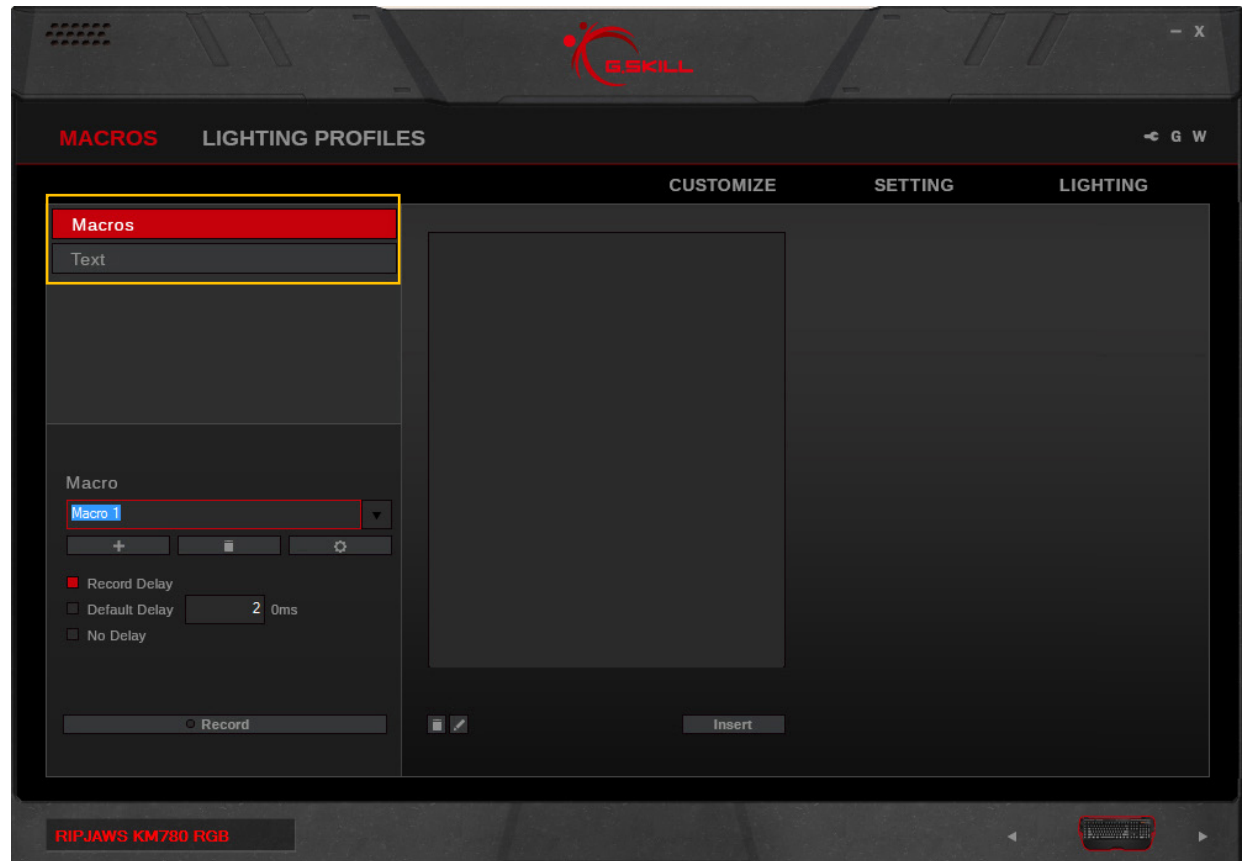
Macros

Introducing Macros

There are two kinds macros you can set: keystroke macro and text macro.

If you are looking to set delays or customize using keystrokes within the macro, then use the keystroke macro.

If you are looking to set text-only macro, then use the text macro.



Macros (Keystroke)

Create a Macro

In the left column, click on the “+” button to create a new macro. Options for recording a macro will appear when a macro is created.

Delete a Macro

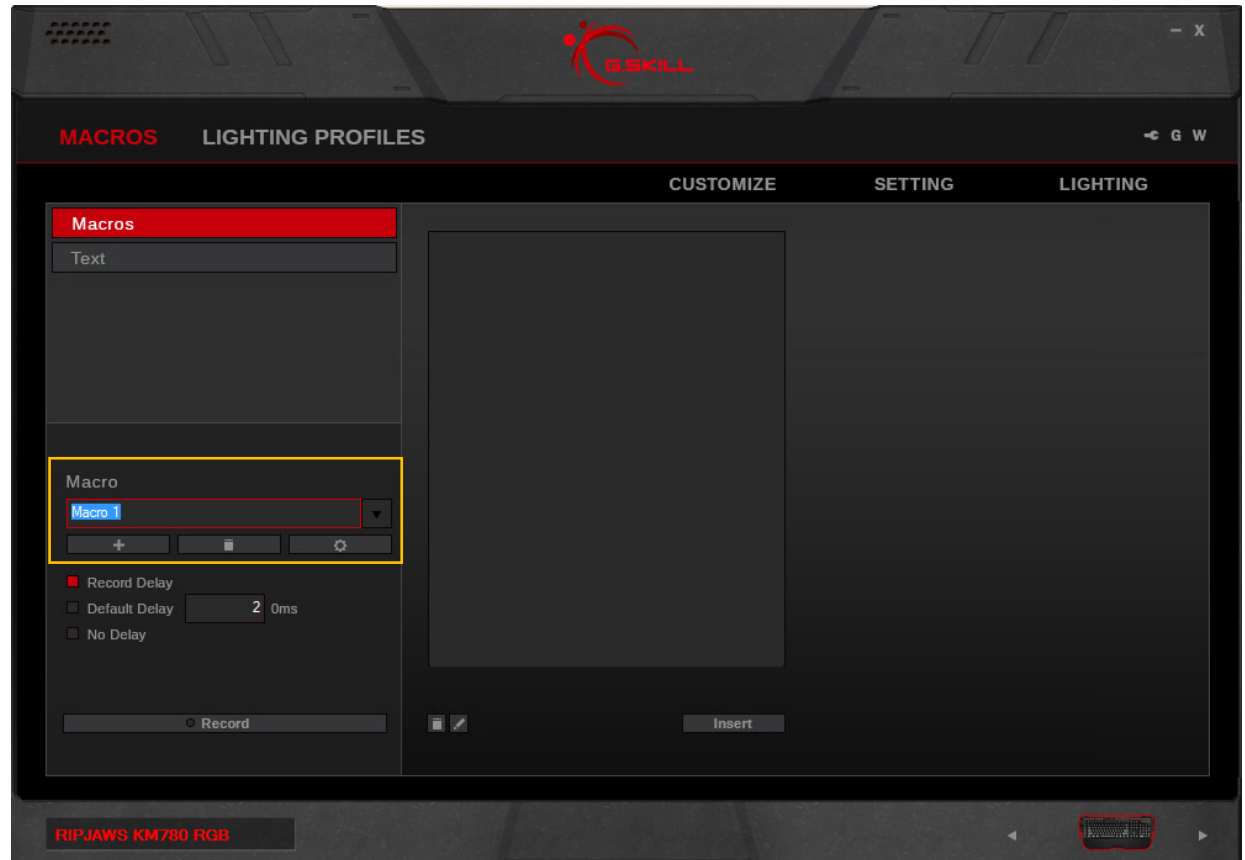
Click on the trash bin icon below the macro name to delete the current macro.

Copy a Macro

Click on the gear icon below the macro name and select “Copy” to make a duplicate of the current macro.

Export/Import a Macro

Click on the gear icon below the macro name and select “Export” (or “Import”) from the list. A window will prompt you to choose a location and a file name to save (or load) the macro.



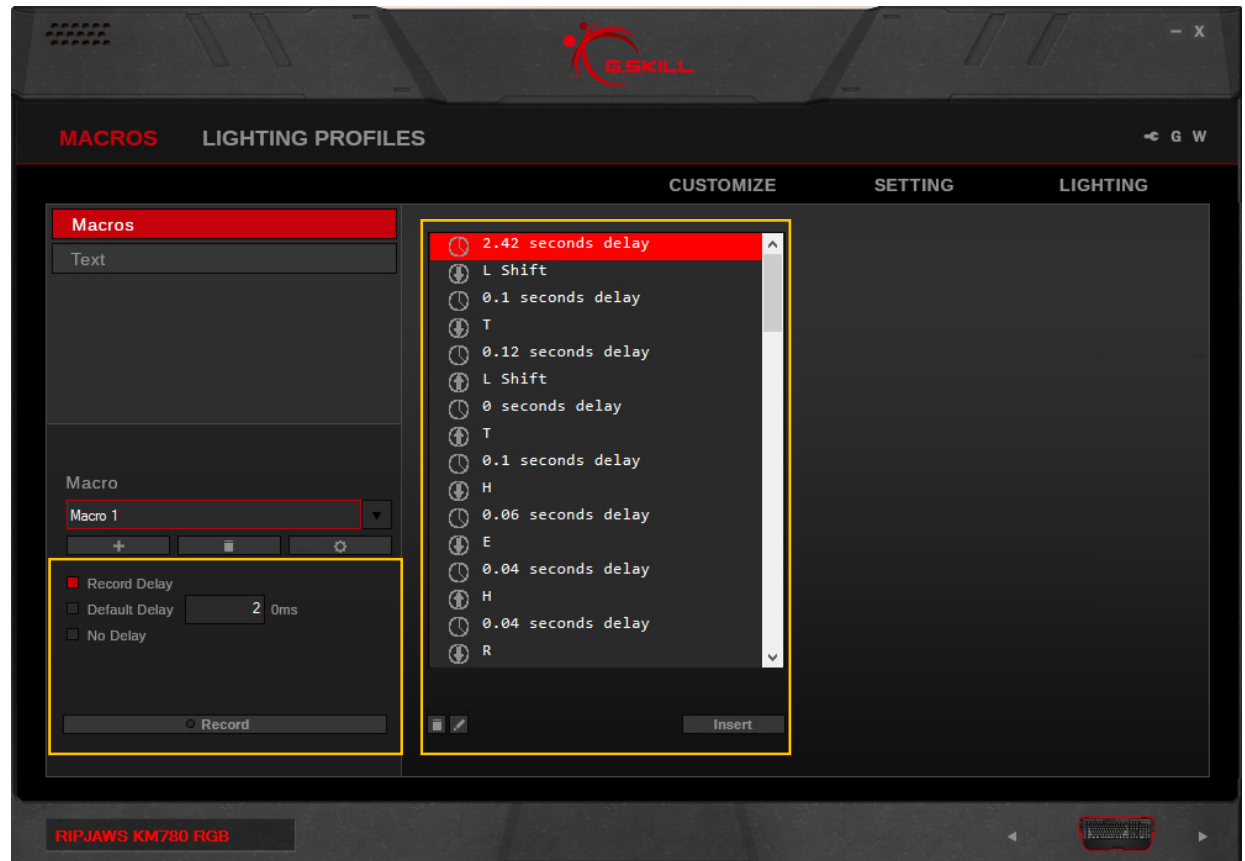
Macros (Keystroke)

Record a Macro

Click on the “Record” button on the bottom of the left column. Macro will begin recording automatically. The recorded macro will appear in the middle column.

Note: Before recording the macro, you may choose to record the delay, use a default delay, or no delays. Default delays can be changed in 10ms increments. Type “2” in the textbox for 20ms, and “20” for 200ms.

To end recording, click “Stop” on the bottom of the left column.



Macros (Keystroke)

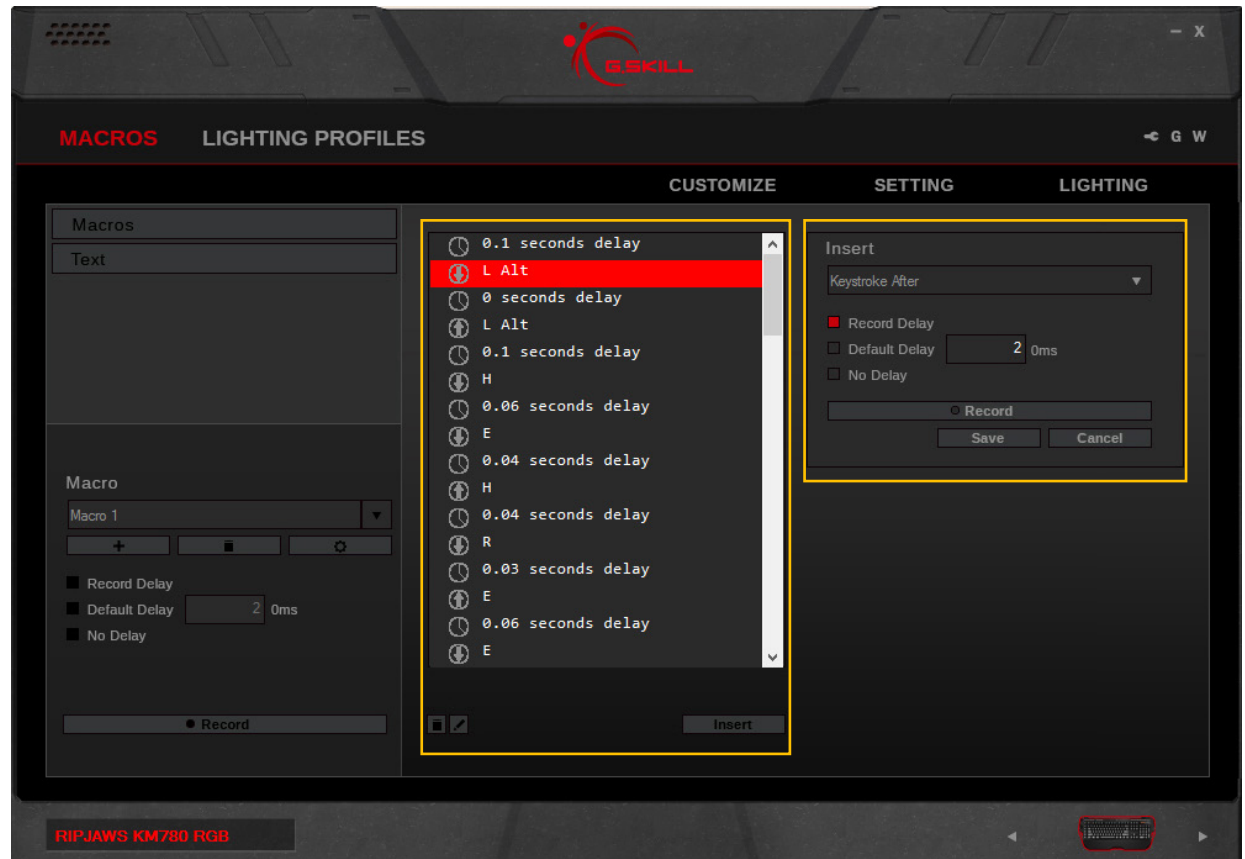
Edit a Macro

You can delete or edit a specific macro command by clicking on the trash bin icon or the pencil icon, respectively, on the bottom of the middle column.

Insert Keystrokes in Macro

Click on the keystroke you wish to edit. Then click “Insert” on the bottom of the middle column. Options will appear in the right column to allow inserting before or after the currently selected keystroke. Then click on “Record” in the right column to record and insert additional keystrokes.

Click “Save” to save the changes.



Macros (Text)

Create a Text Macro

Click the “+” to create a new text macro. Then type the desired text in the textbox on the right. The changes will be automatically saved.

Delete a Text Macro

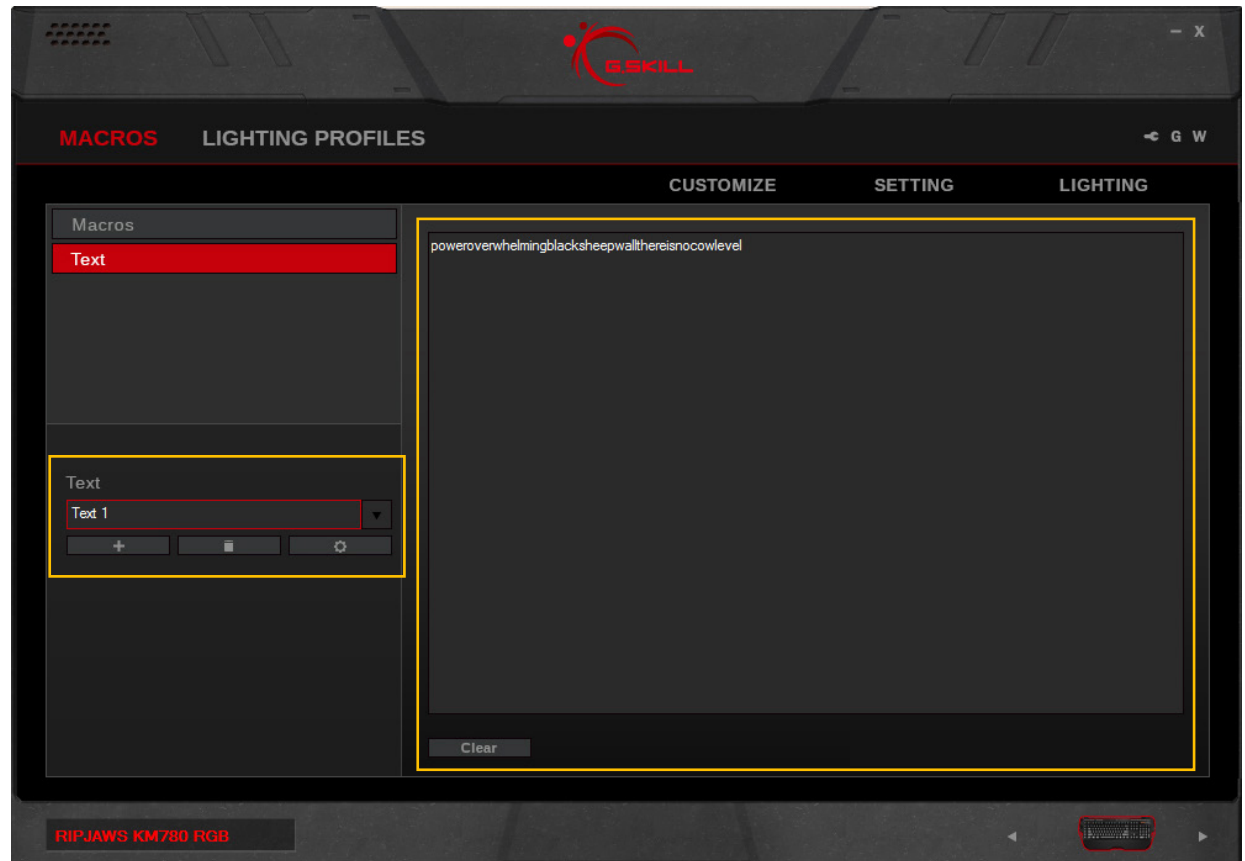
To delete the text macro, click on the trash bin icon below the text macro name. To clear the text for the text macro, click on “Clear” below the textbox.

Copy a Text Macro

Click on the gear icon below the text macro name, and select “Copy” to duplicate the text macro.

Export/Import a Text Macro

Click on the gear icon below the text macro name, and select “Export” (or “Import”) to save (or load) the text macro to a file.

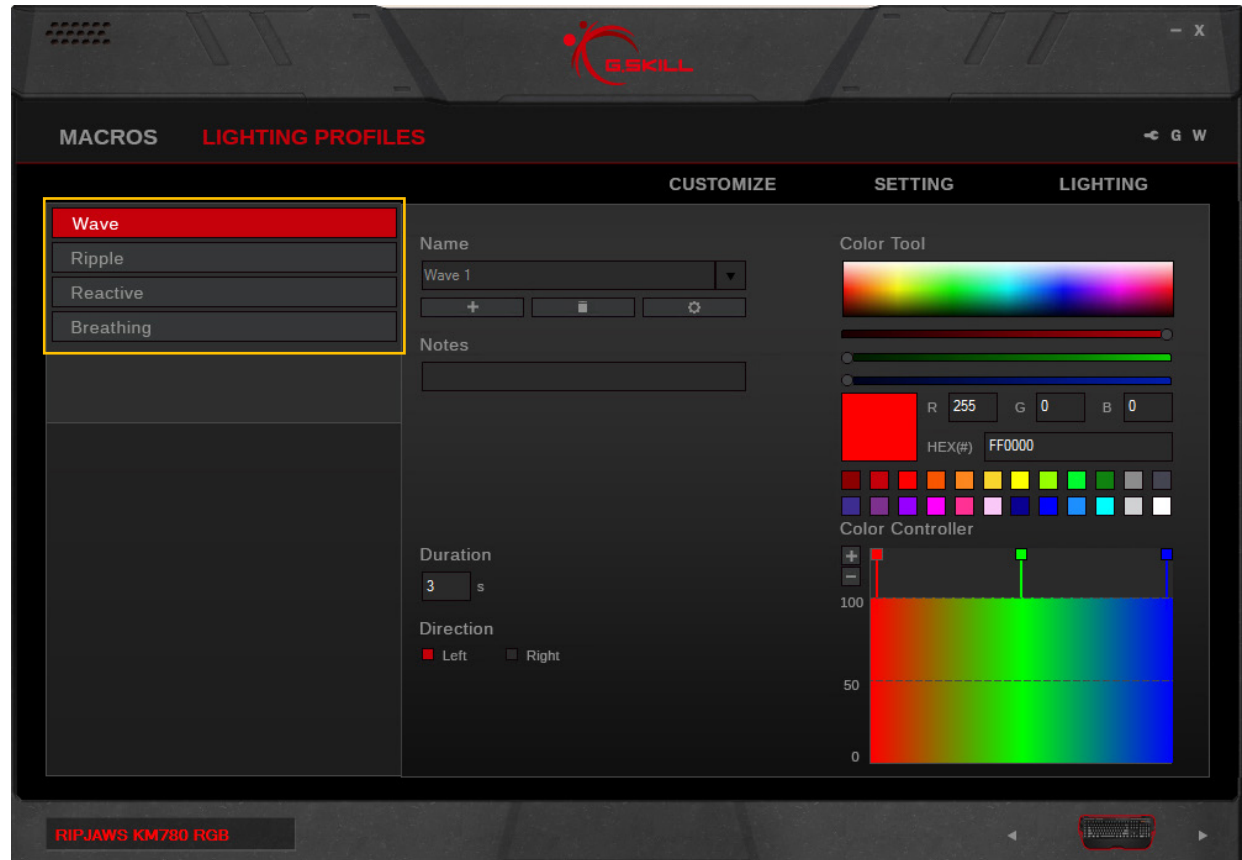


Lighting Profiles

Introducing Lighting Profiles

Lighting profiles are customizable lighting patterns that can be used in a mode and applied to your device. The following lighting profiles are available.

- **Wave:**
A continuous wave of customizable colors, moving across to the left or right.
- **Ripple:**
A circular lighting pattern ripples outward from a pressed key.
- **Reactive:**
Each pressed key will light up for a designated amount of time.
- **Breathing:**
All keys will cycle through a colored pattern.



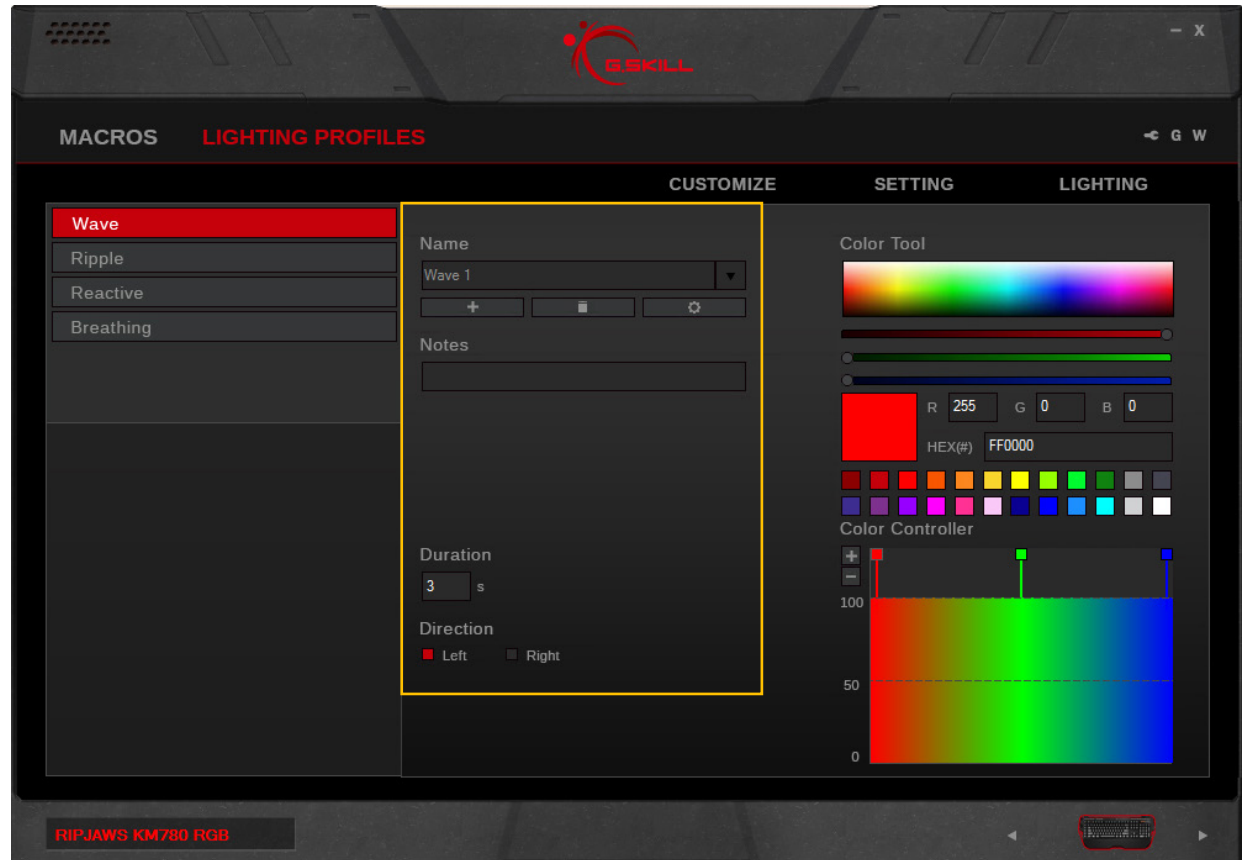
Lighting Profiles

Create a Lighting Profile

First, select a lighting category, then click on the “+” button under “Name” to create a lighting profile.

Once a lighting profile is created, associated options will be available for customizing.

Each lighting profile will be automatically saved. However, to apply the lighting pattern to the device, please go to the “Lighting” section and choose a lighting profile to apply.



Lighting Profiles

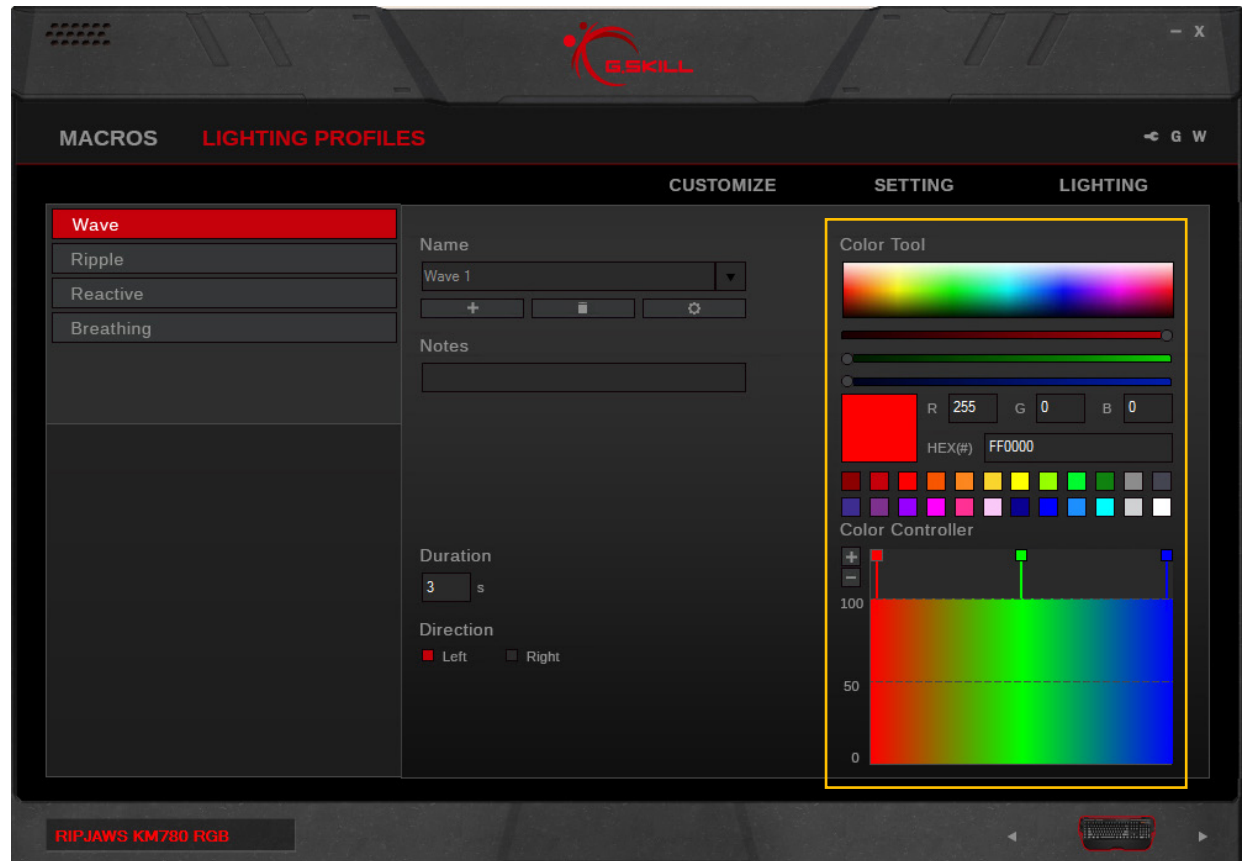
Add a Color

To increase a color point, click on the “+” under “Color Controller” in the right column. A new color point will be added.

Change a Color

Click the square of a color point under “Color Controller”, and then change the color by doing one of the following:

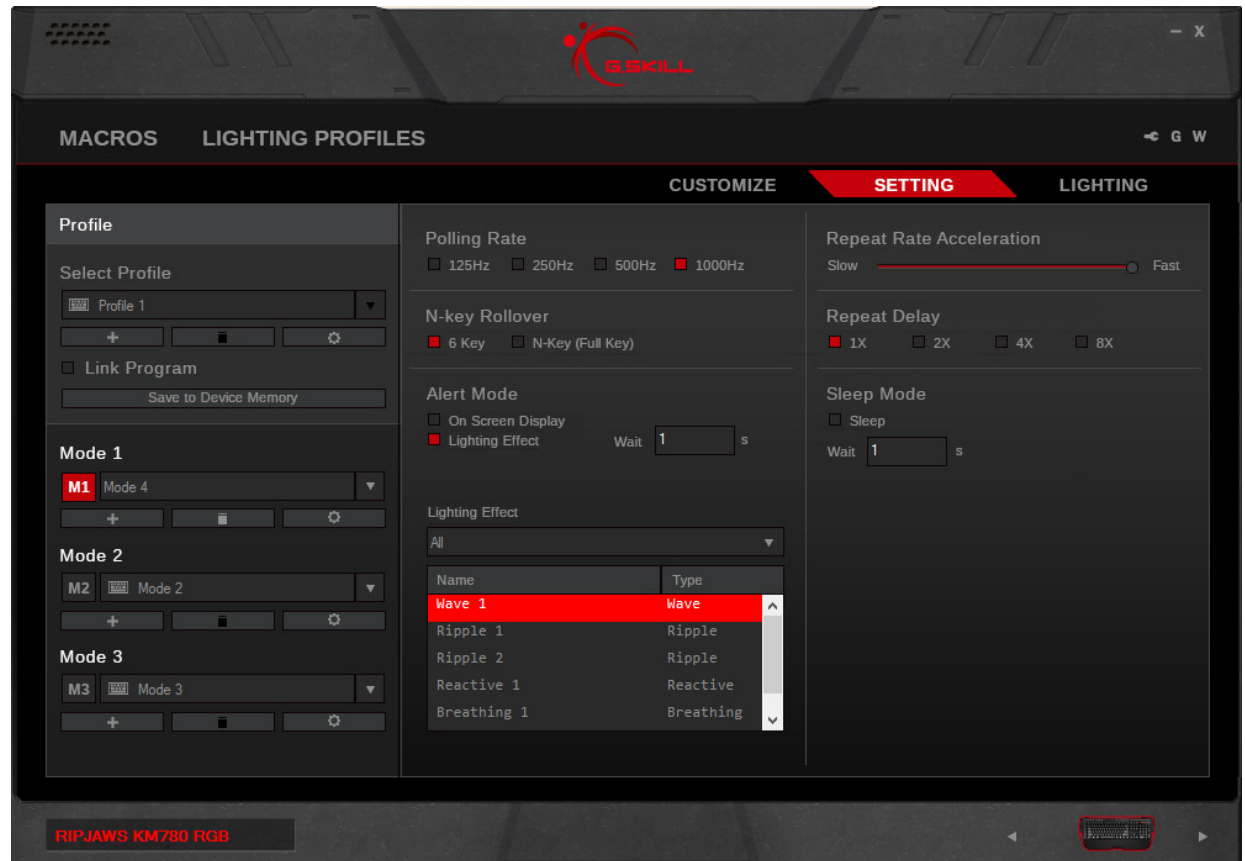
1. Click in the color selection rectangle
2. Click and drag the RGB color slider
3. Enter the RGB value
4. Enter the HEX color code
5. Select from the preset color palette



Setting

Introducing Keyboard Settings

The “Setting” menu will allow you to set general settings for your device. After you have customized your settings, please click on “Save to Device Memory” to ensure the settings are correctly applied to your device.



Setting

Polling Rate

Click to select the desired polling rate of your device. A higher number indicates a faster polling rate.

N-Key Rollover

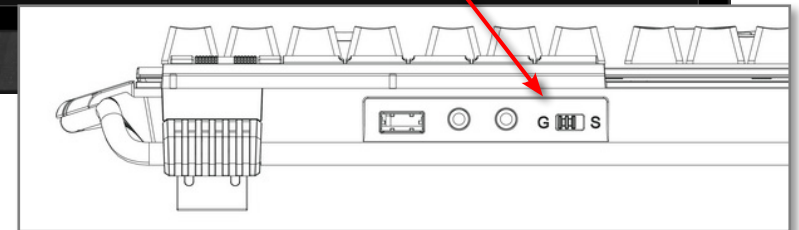
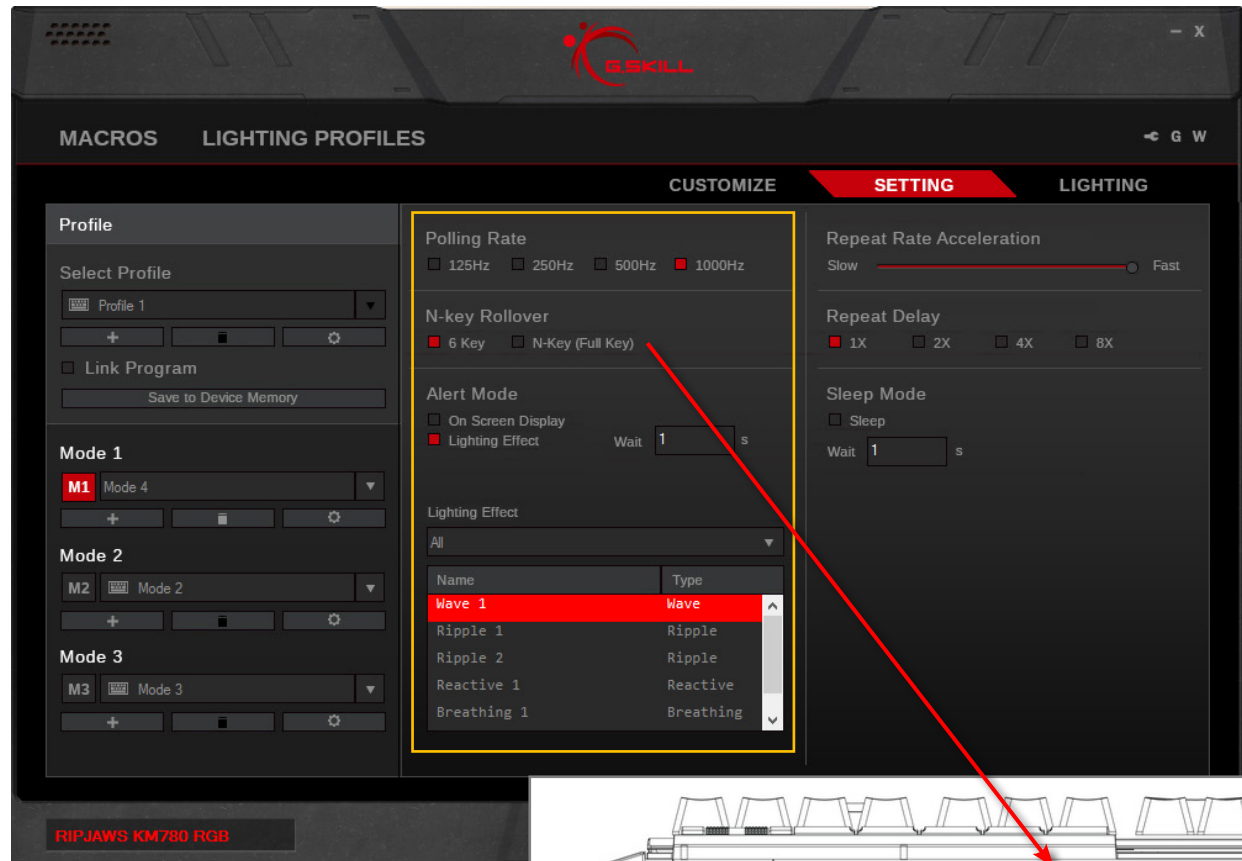
Check your keyboard to change this setting. A switch next to the USB pass-through port can be flipped to “G” for n-key rollover or to “S” for standard 6-key rollover.

Note: Some BIOS interface or legacy software may only have support for standard 6-key rollover.

Alert Mode (Timer Key)

This is the alert settings for the Timer Key. Select from “On Screen Display” or “Lighting Effect”.

The setting for timer delay may be set in intervals of seconds.



Setting

Repeat Rate Acceleration

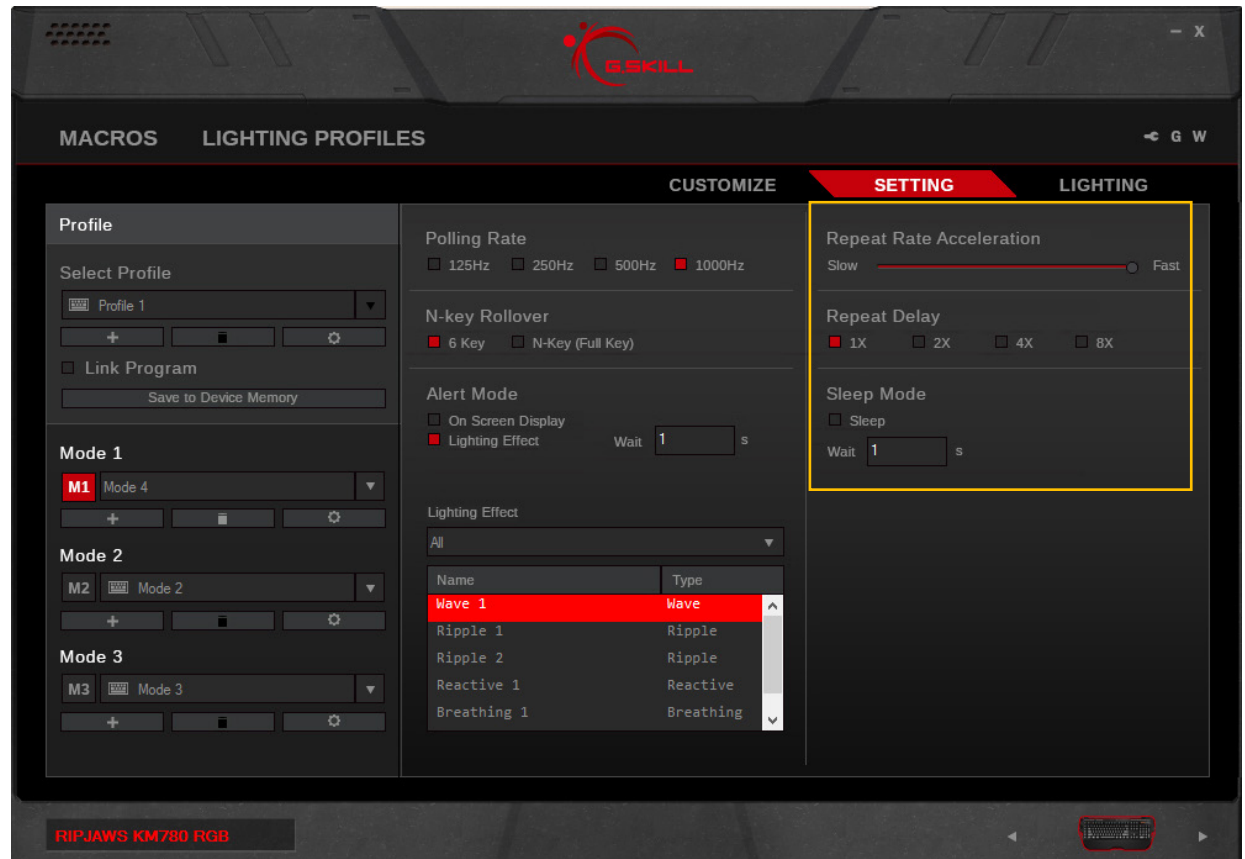
Drag the slider to adjust how fast a key will repeat itself when the key is held down.

Repeat Delay

Allows you to choose the delay time before a key begins repeating itself when held down. 1X is a short delay; 8X is a long delay.

Sleep Mode

Allows you to enable and set a time delay for entering sleep mode.



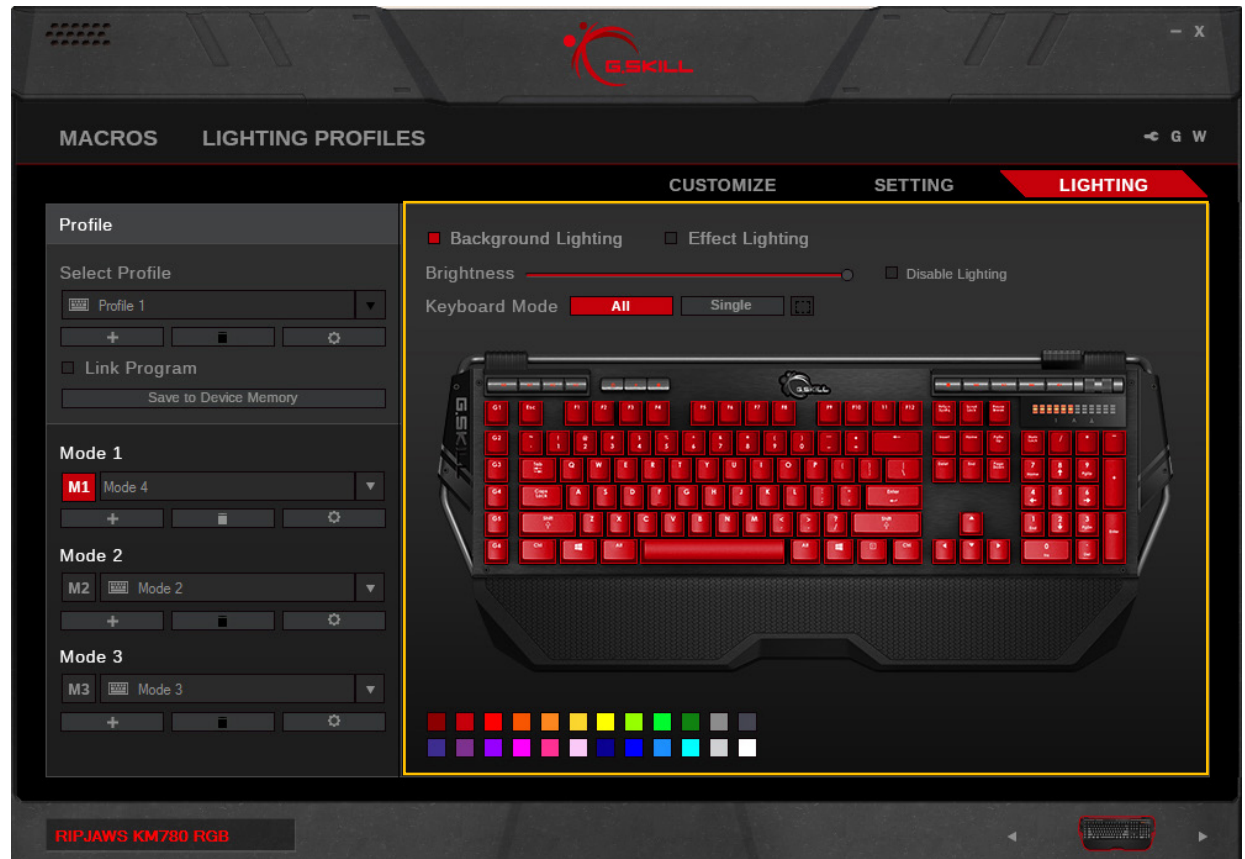
Lighting

Introducing Lighting

Lighting may be customized and applied to your keyboard. There are options to easily set a single overall color, per-key lighting, or effect lighting from lighting profiles.

There are two main lighting options: Background Lighting and Effect Lighting.

Note: Please make sure to select the correct mode before making changes to lighting. Any changes to lighting will affect the currently selected mode. Please also make sure to “Save to Device Memory” to ensure lighting is correctly applied to the keyboard.



Lighting

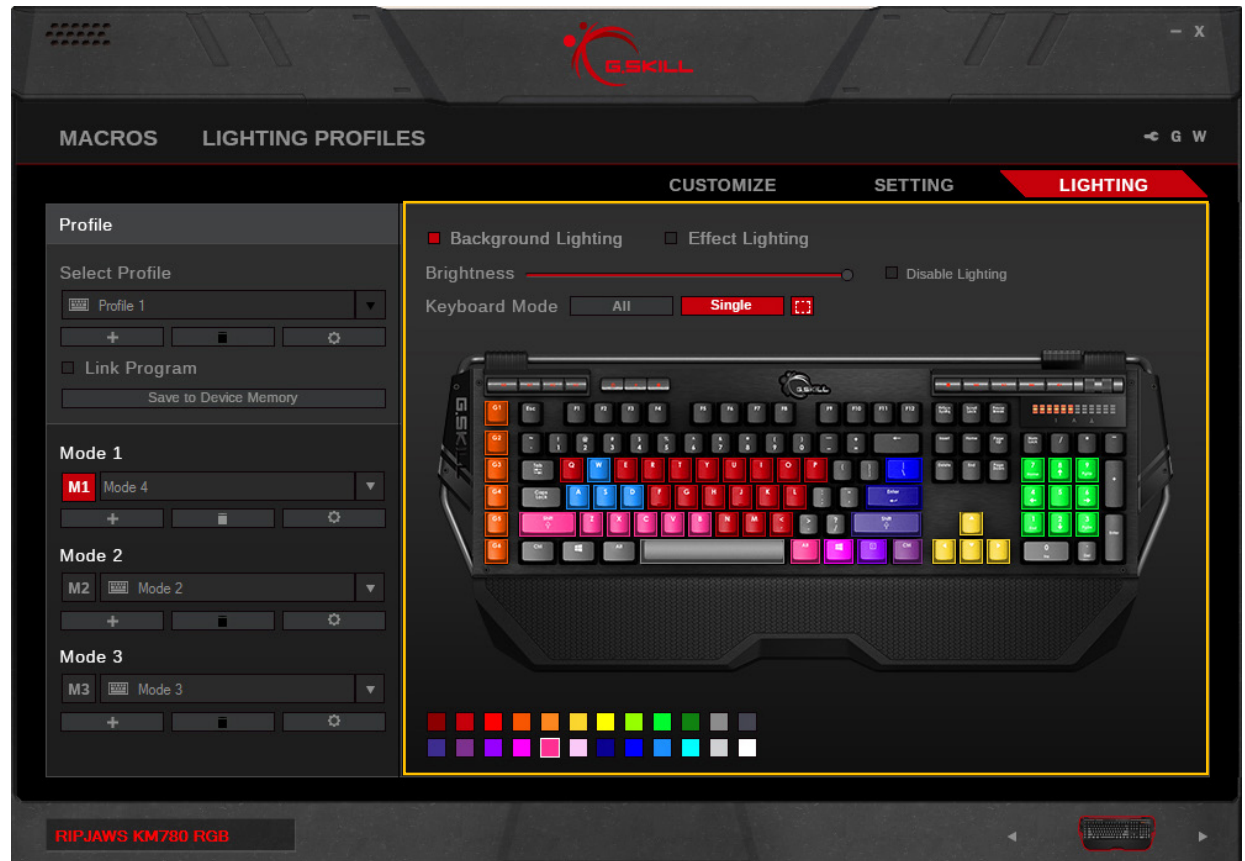
Background Lighting

Choosing this option enables static lighting on the keyboard.

Adjust Brightness

Drag the slider to adjust the brightness of the lighting. Sliding all the way to the left will turn off the lighting.

Lighting can be disabled by checking the box next to “Disable Lighting”. To enable or change any lighting options, please make sure this checkbox is cleared.



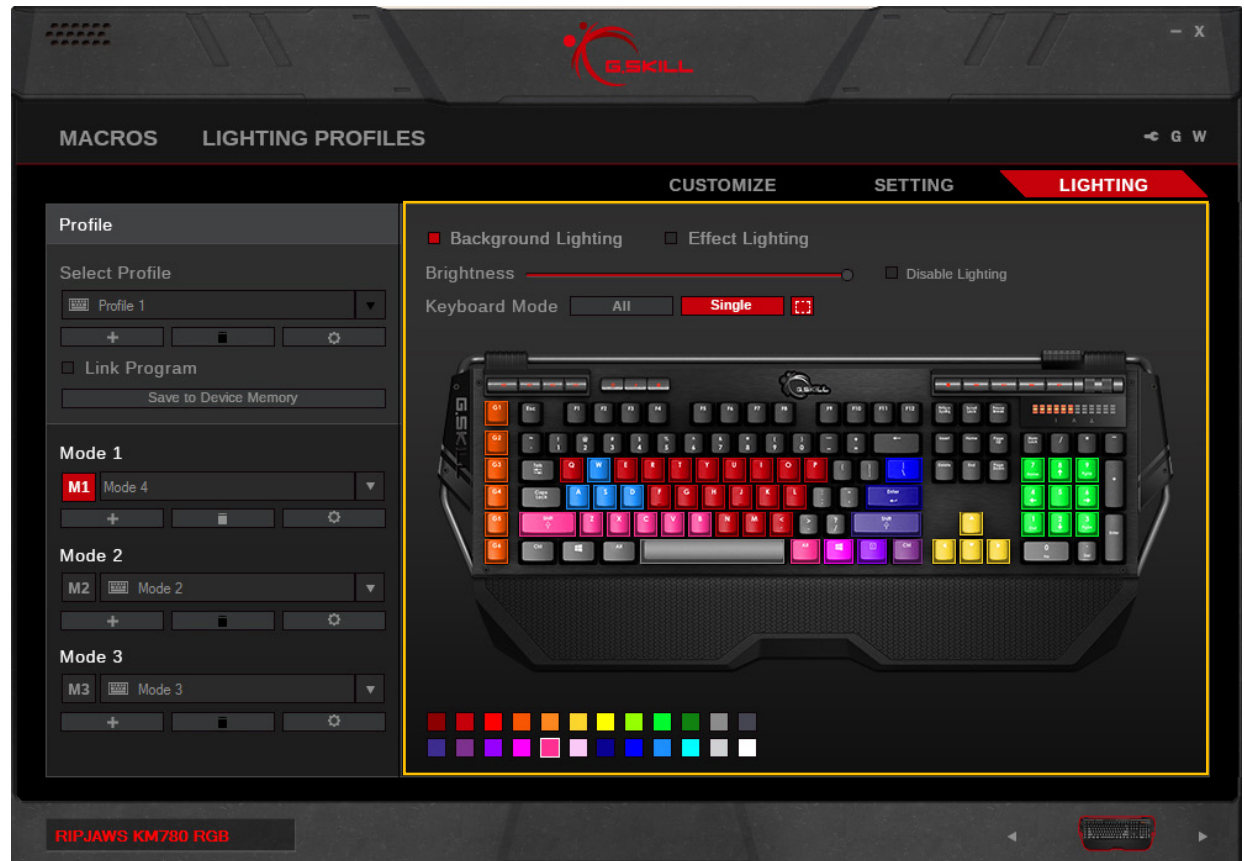
Lighting

Single Color Lighting

Selecting “All” under “Keyboard Mode” will allow you to change the colors of all keys at the same time to a single color. Choose a color from the color palette below the keyboard.

Multiple Color Lighting

Selecting “Single” under “Keyboard Mode” will allow you to change the colors of each individual key. Choose a color from the color palette below the keyboard, and then click on a key or click-and-drag to select a group of keys.

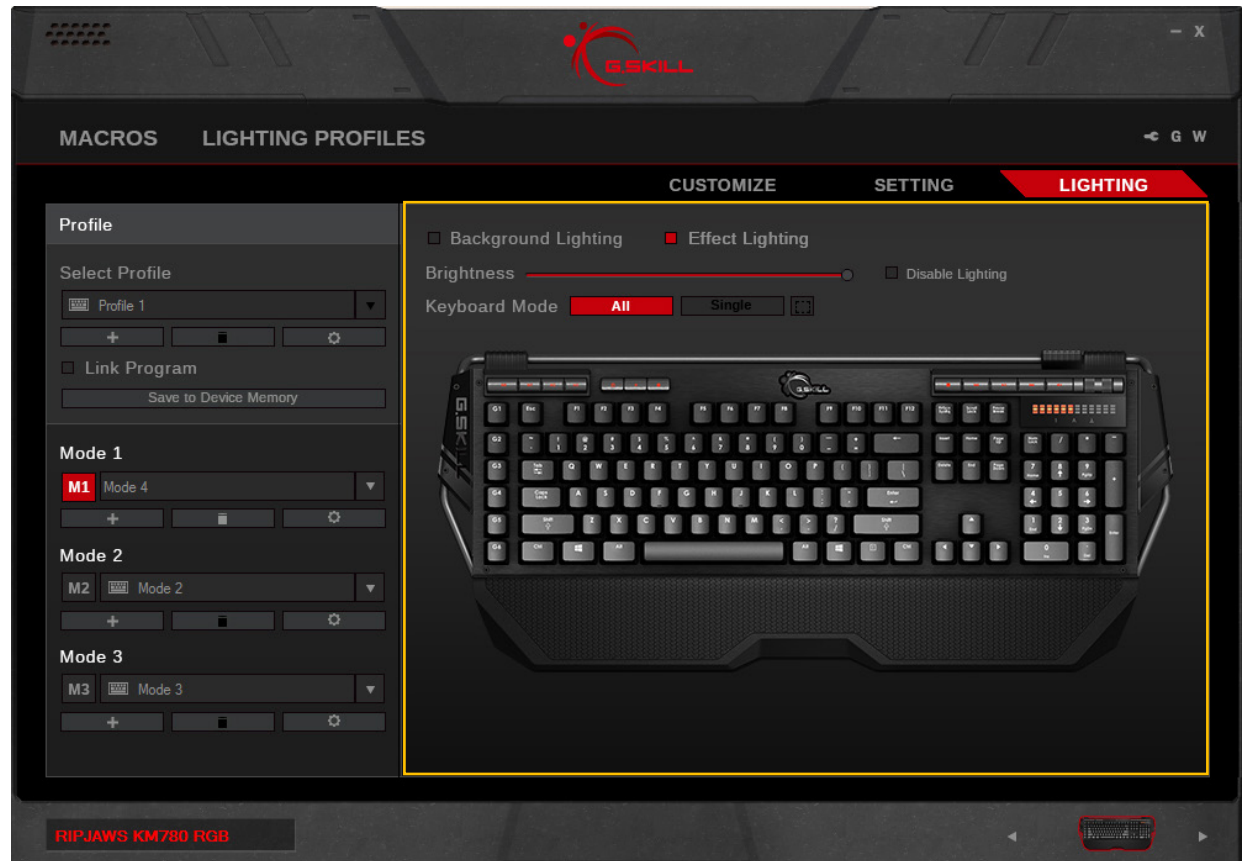


Lighting

Effect Lighting

Clicking on “Effect Lighting” will automatically open a pop-up window. From here, you can filter the lighting effects according to lighting category (or view all), and select the desired lighting profile from the list.

To choose another effect lighting, click on “Effect Lighting” checkbox again, and this will bring up the pop-up window.



Additional Settings

Driver Settings

Click on the wrench icon on the top right to access the driver settings. From here, you can change language, update firmware, update software, reset to default driver setting, and more.

Click the “G” button to visit the G.SKILL webpage.

Click the “W” button to view the warranty document.

Reset to Default Setting

Choosing to activate this option will delete and reset the currently selected profile to its default state. All modes under this profile will be deleted.

